



HAMMON PARK TRAILHEAD

COMMUNITY & YOUTH HUB CONCEPT PLAN

PROJECT #: 1909
CONCEPT DESIGN REV. E
JULY 2020

PREPARED BY  COMMON GROUND FOR  Hepburn
SHIRE COUNCIL

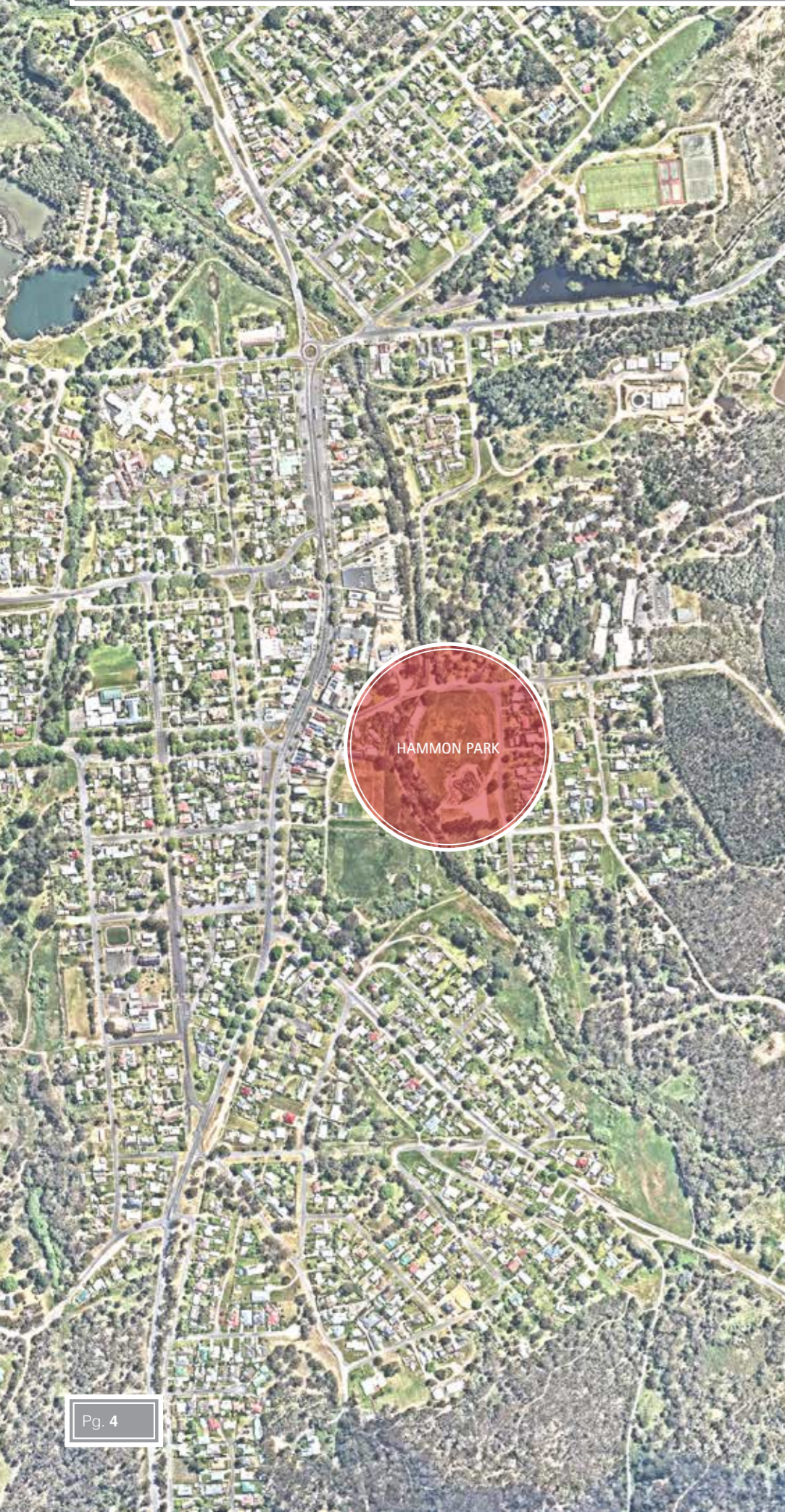


- 3. Locale and Masterplan
- 4. Site Info & Work to Date
- 5. Hammon Park in Relation to Creswick
- 6. Design Vision
- 7. Design Intent
- 8. Expansion of the Masterplan: Zoning & Networks
- 9. Conceptual Design
- 10. Concept Plan
- 11. Bike Events | Community Events | Site Facilities
- 12. Drainage | Vegetation | Lighting
- 13. Nature Play | Safety Track | Bike Playground | Adjacent Amenities
- 14. Skills Loop | Jump Lines
- 15. Pump Track | Parking | Trail Head | Changing Places Facilities
- 16. Sections
- 18. Perspectives
- 27. Staging Plan

CONTENTS



LOCALE & MASTERPLAN



LOCALE

Hammon Park is located in the Central Victorian township of Creswick which lies approximately 19km north of Ballarat, 122km NWW of Melbourne and 100km SSW of Bendigo. The proposed bike facilities within Creswick will be accessible to a population of over 5 million people within a 200km radius, and international and regional airports within a 1.5hr drive.

HAMMON PARK MASTERPLAN

The Hammon Park Masterplan process was completed by Common Ground in 2018. The process involved:

- community and stakeholder engagement
- familiarisation with Creswick township and its broader context
- review of the sport of biking in Victoria both recreationally and competitively
- broader trail review (present and future planning)
- detail review of Hammon Park and it's features. This included connections into town, neighbours, drainage, power, landform, buildings and uses, vegetation, flood zones, Creswick Creek and the sporting infrastructure

The outcome was a masterplan document that provided a structure as to how the site was best spatially arranged to meet the needs of the local community and visitors. It outlined the required networks and zones for the various features that would ultimately become a highlight of Creswick; the Trailhead Bike and Recreation Facility.

Features included:

- ablutions and changing facilities
- bike playground area
- BBQ/picnic areas
- carparking
- cycle safety track network
- dual use path network
- event start/finish and village areas
- jump lines area
- open grass areas
- pump track area
- native revegetation
- nature play area
- pedestrian shelters

BENDIGO

100km

CRESWICK

19km

BALLARAT

122km

MELBOURNE

- skills loop area
- spectator viewing
- swale/drainage network

It also provided:

- precedent imagery, visually displaying what could be achieved with various materials, forms and features
- a descriptive intent of the masterplan and the longterm investment for Creswick
- a detailed description and purpose of all the elements included in the masterplan

To see the full masterplan document visit:

<https://creswicktrails.com/progress/2018/12/13/hammon-park-masterplan-finalised>

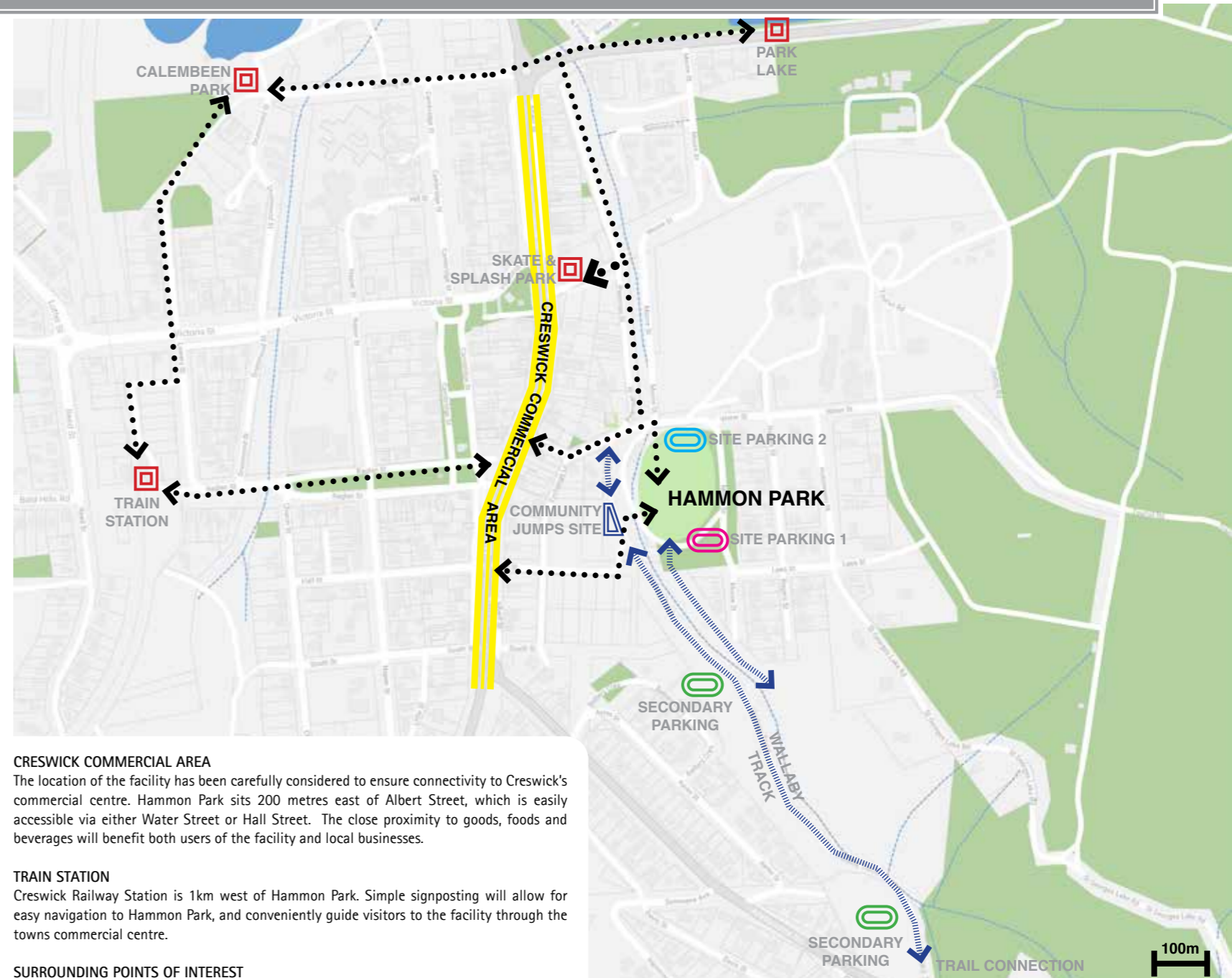
STAGE 1 WORKS

Following development of the masterplan document, Stage 1 of Hammon Park was initiated. This involved the development of the asphalt pump track and adjacent carpark. These were completed and opened to the public in February 2019. The facility has since been drawing a steady stream of satisfied users and intrigued onlookers.

THE NEXT STAGE

The next stage of implementing the masteplan is developing this document, the Hammon Park Trailhead Community and Youth Hub Concept Plan. The intent is to present what could physically be achieved on site. This document is site specific, details the elements outlined in the masterplan document, develops the aesthetics of the facility and provides an opinion of costs for each element. Allowing for staged implementation and itemisation of funding. While the further development of Hammon Park is outside the scope and funding of the Creswick Trails Project, it is essential that the two projects align seamlessly, creating a community space that fully represents the identity of Creswick as a thriving, progressive location to live, visit, stay and play.





CRESWICK COMMERCIAL AREA

The location of the facility has been carefully considered to ensure connectivity to Creswick's commercial centre. Hammon Park sits 200 metres east of Albert Street, which is easily accessible via either Water Street or Hall Street. The close proximity to goods, foods and beverages will benefit both users of the facility and local businesses.

TRAIN STATION

Creswick Railway Station is 1km west of Hammon Park. Simple signposting will allow for easy navigation to Hammon Park, and conveniently guide visitors to the facility through the towns commercial centre.

SURROUNDING POINTS OF INTEREST

A broader connection from the train station provides links north to Calembeen Park and Park Lake Gardens. A direct link down Pearman Street connects back to Hammon Park via the Skate and Splash Park. Each point of interest is accessibly situated within a 1.4km radius of Hammon Park.

PARKING

Site Parking 1 – Existing

Site Parking 1 is an existing parking lot developed with the pump track. This can accommodate up to 37 vehicles and has space adjacent where an extension could be considered if required.

Site Parking 2 – Proposed

Site Parking 2 is an existing pull in area and services the existing buildings. This parking lot is proposed to be formalised to better service the existing buildings while they remain in use. Upon the removal/renovation of the existing buildings there will be the opportunity to expand this parking area if more parking was desirable and deemed beneficial to the facility. The location is well suited to provide parking for users wanting access directly to the open turf areas, to event organisers/officials, for controlled vehicle entry onto the site for maintenance and event setup/management and can be configured to ensure inclusion of sufficient accessible parking options for mobility restricted visitors.

Secondary Parking

Secondary opportunities for trail head parking expansion include an open space between

Battery Crescent and Wallaby Track and the disused Northcote Park soccer pitch. The locations are both serviced from the existing road network and provide cyclist and pedestrian connection to Hammon Park via the Wallaby Track and over the proposed cyclist/pedestrian Creswick Creek bridge. The scale and vision of the project will demand parking facilities capable of accommodating seasonal visitor influx during holiday periods and events.

TRAIL CONNECTION

While independently scoped and funded, the Hammon Park Trailhead – Community and Youth Hub also forms the primary Trailhead for the 100km Creswick Trails Network. The interface between the two projects is at the southern end of the site. A green shared use trail and the Wallaby Track will connect Hammon Park to the broader trail network. The trailhead for the network and events staging will be at the Hammon Park Trailhead Community and Youth Hub.

COMMUNITY JUMPS SITE

A site adjacent to Hammon Park has been identified as a potential location for a community jumps area if deemed desirable and appropriate. The designated space would be ideal in location and size. Unlike the Hammon Park development, the success of this facility would depend on it being championed by the local community. There are many successful examples of community managed jump parks both nationally and internationally.



DESIGN VISION



The intent of the Hammond Park Trailhead Community and Youth Hub Concept Plan is to create a world-class mountain bike and recreational trail facility. To achieve the intent the following design principles have been considered.

STIMULUS

When planned and delivered well, projects such as this can revitalise regional communities, bringing significant economic and social benefit. Complimenting the Creswick Trails network, the further development of Hammon Park will contribute to establishing the town as a multi-day, mountain biking destination – further cementing Creswick's growing status as a cycling event hub.

COMMUNITY | SOCIAL | RECREATION | INCLUSION

Community use and ownership of Hammon Park is a primary objective of this Concept Plan. A diverse number of areas appealing to a broad range of the community have been incorporated into the design, intentionally attracting those not necessarily interested in just riding bikes. Features attractive to a broad range of ages and abilities have been included to ensure the facility is as family friendly as possible, while still providing exciting challenging experience for those looking to enhance their bike skills. The site is specifically configured to host community activities and events, such as farmers markets and community outdoor cinemas. There is also a shared use building, which has been identified for renovations, which is available for local club and group use. It is envisaged that these attributes will encourage the local community to frequently utilise, enjoy and connect to the facility.

Social gathering areas have been included in the design maximising vantage points. There are areas for viewing each of the facilities features and areas to watch over young adventurers as they play, with quick access to lend a hand if required. The equally distributed vantage points create passive surveillance across the site as a broad safety principle. Spaces with shelter and of varying sizes are provided to easily accommodate gatherings of varying numbers, and multiple groups at any given time.

Hammon Park has been identified as a Regional Level Play Space in the Hepburn Shire Council Play Space Strategy and this process of design has addressed the expectations set out in this strategy. It is a family friendly facility people will be willing to travel to and is engaging enough to spend an entire day at the site. It offers recreation opportunities for all ages, all abilities and is gender neutral in nature. The hub will encourage open ended play, set challenges that require basic risk assessment, and allow for various movements and engagement of all senses. A diverse range of activities for exploration will be fluid throughout the design encouraging users to migrate curiously through the space.

Access for all is paramount. The design specifically provides access for all users, to all of the major facilities. There is adequate space considered for maneuvering accessibility aids and recreation equipment. The central trailheads, shelters and facilities all provide generous space to provide ease of access for wheelchairs and prams. The dual use path network adheres to accessibility standards and accessible viewing points are plentiful. Where possible, and appropriate, specific access and equipment has been provided to encourage all-inclusive play. The ablutions and changing rooms are strategically located to accommodate a Changing Places facility. They are adjacent to the car park, accessible to all of the onsite features, and importantly, accessible to all requiring access whilst visiting the town of Creswick. Changing Places facilities allow for many people with disabilities to travel to areas that they would

otherwise not be able to.

TOPOGRAPHY AND VEGETATION

The site has been specifically designed to generate interest. The existing site levels have been used to create the site features, for example the head of the jump lines as an elevated high point. Additional fill is proposed in other areas to create diversity in topography and ensure every elevated element provides more than one use. The drainage swales are integrated into the site and create another element of amenity by providing aesthetically pleasing plant diversity. Existing vegetation is to be retained and will be a great asset to the facility, especially while proposed juvenile native vegetation establishes and matures.

TRAIL HEAD AND WAYFINDING

There are four main social spaces. These areas provide shelter, access to ablutions, space for 'hanging out' and vantage points for spectating. While these are all located to be logical in relation to visitor flow around the site, they will contain signage outlining intended use of the space and expected etiquette. Wayfinding signage is to be provided and will also be communicated through choice of path materials. All wayfinding signage is to be easily identified and interpretable for ease of connection to the towns existing facilities and businesses.

EXTERNAL CONNECTIONS

The Hammond Park facility is the interface between the mountain biking community (both local and visiting) and the greater Creswick community and local businesses allowing an effortless flow of pedestrians and cyclists between the two areas. The facility layout provides logical access points that link to the town's businesses. The facility and town will benefit greatly with an effortless flow of pedestrians and cyclists between the two area.

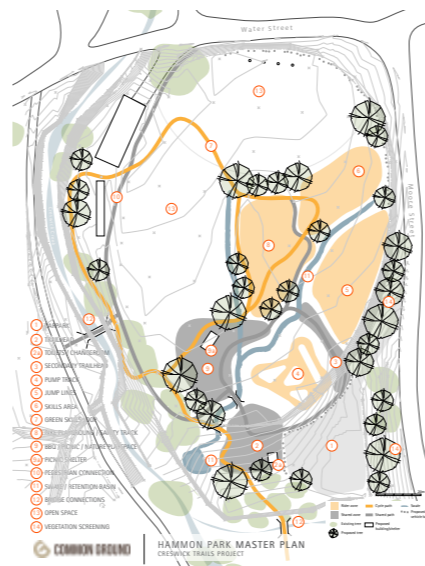
The Concept Plan also incorporates further development of the trailhead for the broader Creswick Trails network. The network will be easily accessed and signed from Hammon Park. The design allows for a trail loop and finish/service area for use during events. The best events are staged with excellent facilities and Hammon Park offers the opportunity to create such a venue.

PRIDE OF PLACE

The site's history as an active sports oval will be preserved and celebrated ensuring there is a connection between old and new. A large portion of the oval is to be retained for recreation, including the retention of the historical northern 50m line and goalposts. The design of the new facility displays great attention to detail and consideration of function. It incorporates a creative and stimulating range of themes, colors and materials – providing engaging interactions for all site users, regardless of interest, age and ability. The concept plan delivers an innovative recreational community asset which all residents of Creswick will be proud of. The facility is anticipated to draw return visitors from near and far and will quickly become a recurring day trip destination that is widely known.



HAMMON PARK MASTERPLAN



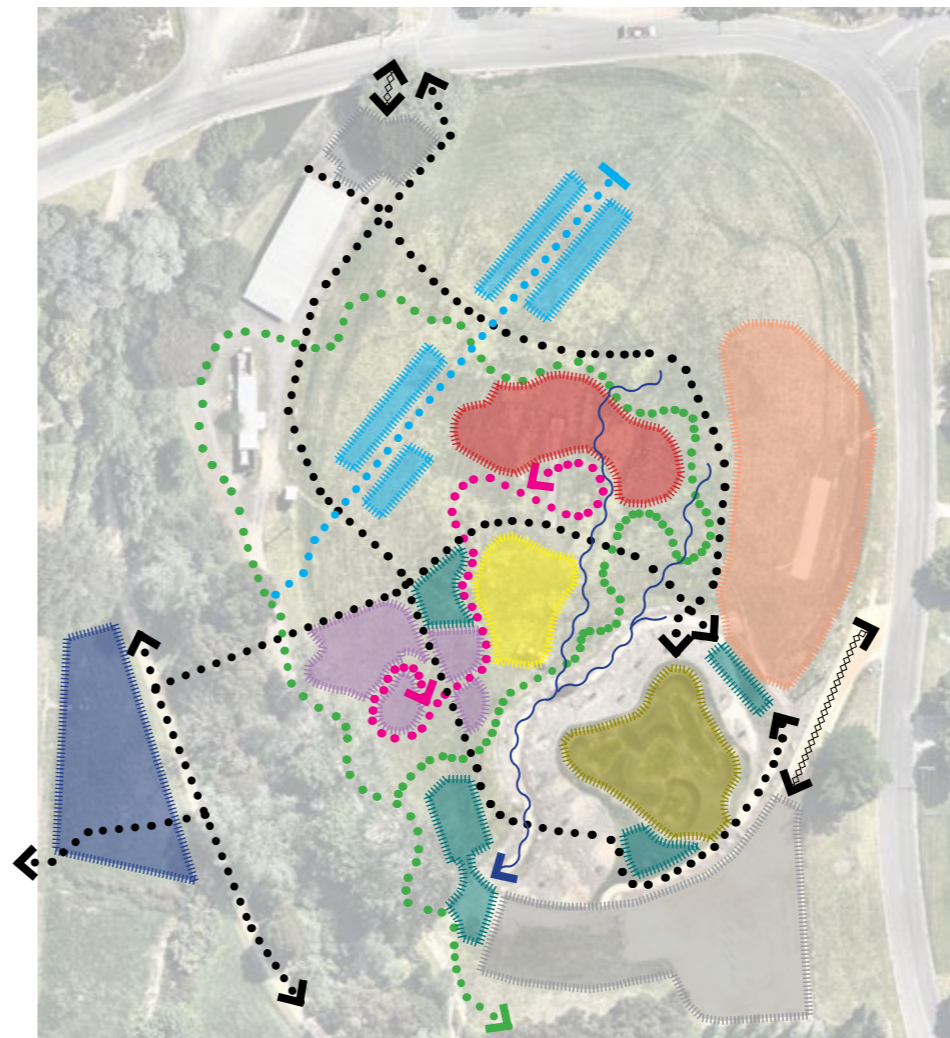
The Hammon Park Masterplan (2018) outlined a framework that was developed through site analysis, consultation with the local community, and was delivered through collaboration with the Hepburn Shire Council. The masterplan concepts created a framework to guide development of this Concept Plan.

The framework has developed further through the conceptual design process, outlining site specific features in a more detailed manner. Each element in the masterplan was reviewed and if deemed suitable has been incorporated into the concept design. Care has been taken to ensure features have been selected that are of high recreation and social value to the facility users. There has been further consideration into ensuring the trail and path network provides access for all and that the network is logical, cohesive, and incorporates the most suitable attributes outlined in the masterplan.

Attributes outlined in the masterplan which have been incorporated into the concept plan include:

- ablutions and changing facilities
- bike playground area
- BBQ/picnic areas
- carparking
- cycle safety track network
- dual use path network
- event village areas
- event start/finish chute area
- jump lines area
- open grass areas
- pump track area
- native revegetation
- nature play area
- pedestrian flow to and throughout site
- shelters
- skills loop and skills track area
- spectator viewing
- swale/drainage network
- trailhead areas
- vehicle access locations

SPATIAL AND NETWORK DEVELOPMENT OF THE HAMMON PARK MASTERPLAN



- Dual use path suitable for bikes and pedestrians. This path network will be compliant with access for all requirements
- Green and blue skills loop consisting primarily of beginner level obstacles. Any obstacles that are rated higher than green will be on an optional secondary alignment. The surface will be trail in nature consisting of compacted clean fill
- Event finish and service chute can be aligned across open turf with event infrastructure set up either side of the chute
- Safety track to be an asphalt track that imitates a typical road network featuring line-marking and signage with role playing / imaginative play stops located throughout the track
- Constructed swales to assist with drainage into the existing swale on the northern side of the existing pump track that connects to Creswick Creek
- Nature play area featuring play equipment designed to meet nature play principles
- Jump lines area consisting of a combination of timber and dirt jump features. The start area consists of raised timber structure including a elevated viewing point
- Areas allocated for trailhead, viewing, changing, toilet, shelter, picnic and water source areas. Signage and landscape furniture will be allocated appropriately per area
- Existing asphalt pump track
- Skills track consists of beginner, intermediate and expert features that would be encountered in the broader Creswick trail network
- Car parking
- Potential community jump park area



CONCEPTUAL DESIGN



BIKE FEATURES

- 1 Existing asphalt pump track
- 2 Jump lines providing double black, black, blue and green options for optimal progression and continued challenge
- 3 Skills track with green, blue and black features that would be typically encountered within the larger trail network. The track offers many line options and loops back to the beginning for continuous use
- 4 Skills loop with green and blue features that provides a loop through the facility with exit options to other features of the facility. This connects to the broader Creswick Trails network for ease of flow in and out of the facility
- 5 Bike playground with green features to assist the development of bike handling and confidence in a playful environment
- 6 Safety track includes a path with typical road features including kerbing, line marking, signage and 'attractions' with pull off/parking bays. The features give the safety track additional interest and evoke imagination play
- 7 Mountain bike trials riding area
- 8 Community jump park area

LANDSCAPE FEATURES

- 10 Existing compacted gravel carpark (26 spaces)
- 11 Compacted gravel carpark extension (22 spaces)
- 12 Upgraded compacted gravel carpark (10 spaces)
- 13 Existing revegetation project to be retained and enhanced
- 14 Investigate revegetation and regeneration opportunities for Creswick Creek
- 15 Existing pavilion for continued use initially. Investigation required to refurbish pavilion as a multi-use community hall with storage, small commercial kitchen, toilets, change rooms and flexible use spaces. To serve as club rooms for several existing clubs. Water saving features like tanks and use of non-potable water and solar power should be investigated and strongly considered
- 16 Existing public toilet block to be demolished
- 17 Toilet, changing, shower facility designed to all access standards. Water saving features like tanks and use of non-potable water and solar power should be investigated and strongly considered
- 18 Dual use concrete path designed to all access standards
- 19 Connecting 3m wide pedestrian/cycle bridge across Creswick Creek
- 20 Existing Wallaby Track to be retained and protected and included on wayfinding signage at the trailhead

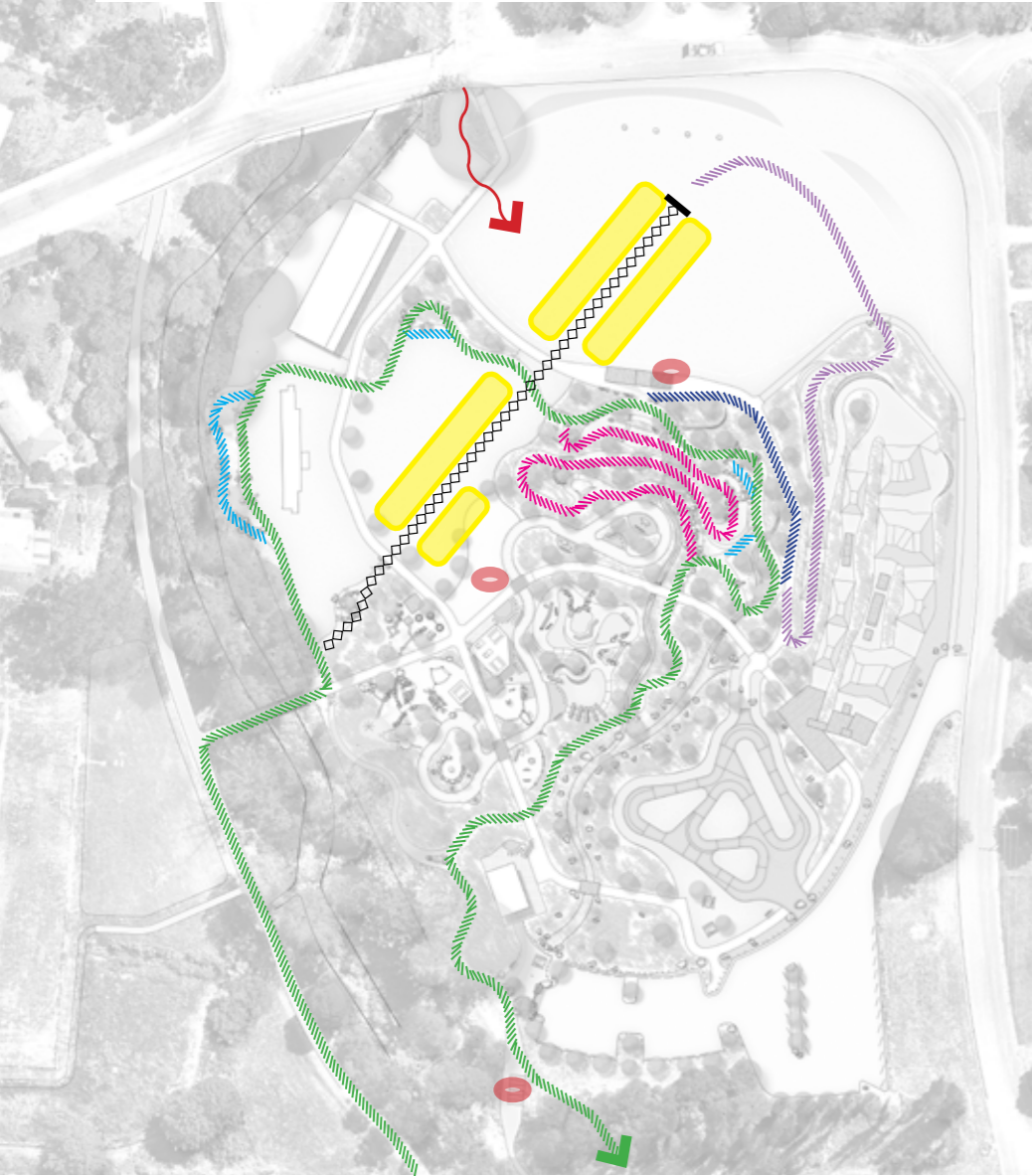
PLAY FEATURES

- 9 Nature play playground to follow continuous and imaginative play principles that appeal to the seven senses. Play items are to typically be raw and where possible natural materials. Some areas will include a music corner, 'camp fire' story telling area, cubby construction, sand and water play, discover items etc. Incorporate flora species found in the Regional National Park to encourage native fauna into the site.

- 21 Existing drainage swale to be vegetated with riparian vegetation
- 22 Extension of existing drainage swale and riparian vegetation
- 23 Elevated deck with furniture and shelter for viewing and gathering. Also used for start platforms of jump lines
- 24 Large shelter with picnic tables and BBQs for community use
- 25 Small shelter with picnic setting for community use
- 26 Primary trailhead to include arrival feature, picnic table, tool post, drinking fountain and trail information signage
- 27 Turf area with existing goal posts and 50m line-marking for community use, events, celebrations and farmers markets
- 28 Informal turf area
- 29 Endemic native planting including groundcovers, shrubs, sedges, rushes and trees
- 30 Back of house service area
- 31 Provision for 100m start/finish straight to be retained as open space
- 32 Location for portable cinema screen to utilise football posts if needed
- 33 Retained football posts with net installed behind
- 34 Sand pit for play and CX events
- 35 CX staircase
- 36 CX flyover

LEGEND

- | | |
|--------------------------------|--------------------------|
| Turf | Coloured Paved Areas |
| Planting | Sand Softfall |
| Tree | Swale |
| Concrete Path | Signage |
| Asphalt Pump Track | Picnic Setting |
| Red Asphalt Safety Track | Compacted Gravel Parking |
| Trail | Timber Mulch |
| Dirt Jumps | |
| Timber Decking & Bike Features | |
| Boulders | |
| Rock Pitching | |
| Feature Paving | |



BIKE RELATED EVENTS

- Lapped loop connecting Hammon Park to Creswick Trails network and adjoining southern land - green trail/features
- Lapped loop optional trail - blue trail/features
- Lapped loop optional line through skills area to Finish chute alignment
- Optional link from the end of the finish chute to go over the green jump line and reconnect to the Skills Track
- Optional link to connect further back to the Skills Loop after riding the green jump line
- 100m Finish chute alignment
- Event setup space
- Site access for setup
- Permanant CX features

Hammon Park will be able to accomodate a range of varying bike related events, including Cyclocross (CX), freestyle competitions, clinics/workshops and space for large race staging.

The pump track and jumps will be utilised for any freestyle type events, and the pump track, jump line and skills loop will be suitable for clinics/workshops.

The arrangement of the facility means the following racing could easily be accomodated as demonstrated but not restricted to the alignments on the diagram above:

- Kids racing within the facility
- Lapped (2.5-3.5km) CX racing using Hammon

Park for a portion of the race course and start/finish area/village. Utilise adjoining land/trails south of Hammon Park

- Lapped XC racing using Hammon Park for a portion of the race course and start/finish area/village. Utilise the Creswick Trails network
- Lapped XM racing using Hammon Park for a portion of the race course and start/finish area/village. Utilise the Creswick Trails network
- Single loop XM racing using Hammon Park for a portion of the race course and start/finish area/village. Utilise the Creswick Trails network
- Enduro racing start/inish area. Utilise the Creswick Trails network



COMMUNITY EVENTS

- 3x3m Gazebo laid out in typical farmers market arrangement
- Pedestrian flow through example farmers market layout
- Outdoor cinema and viewing cone
- Oval playing field 50m line
- Flat turf sports field with goal posts suitable for a range of sport and leisure activities
- Flat turf sports field ideal for active or passive activities
- Central shelter with BBQs and picnic settings suitable for small community gatherings

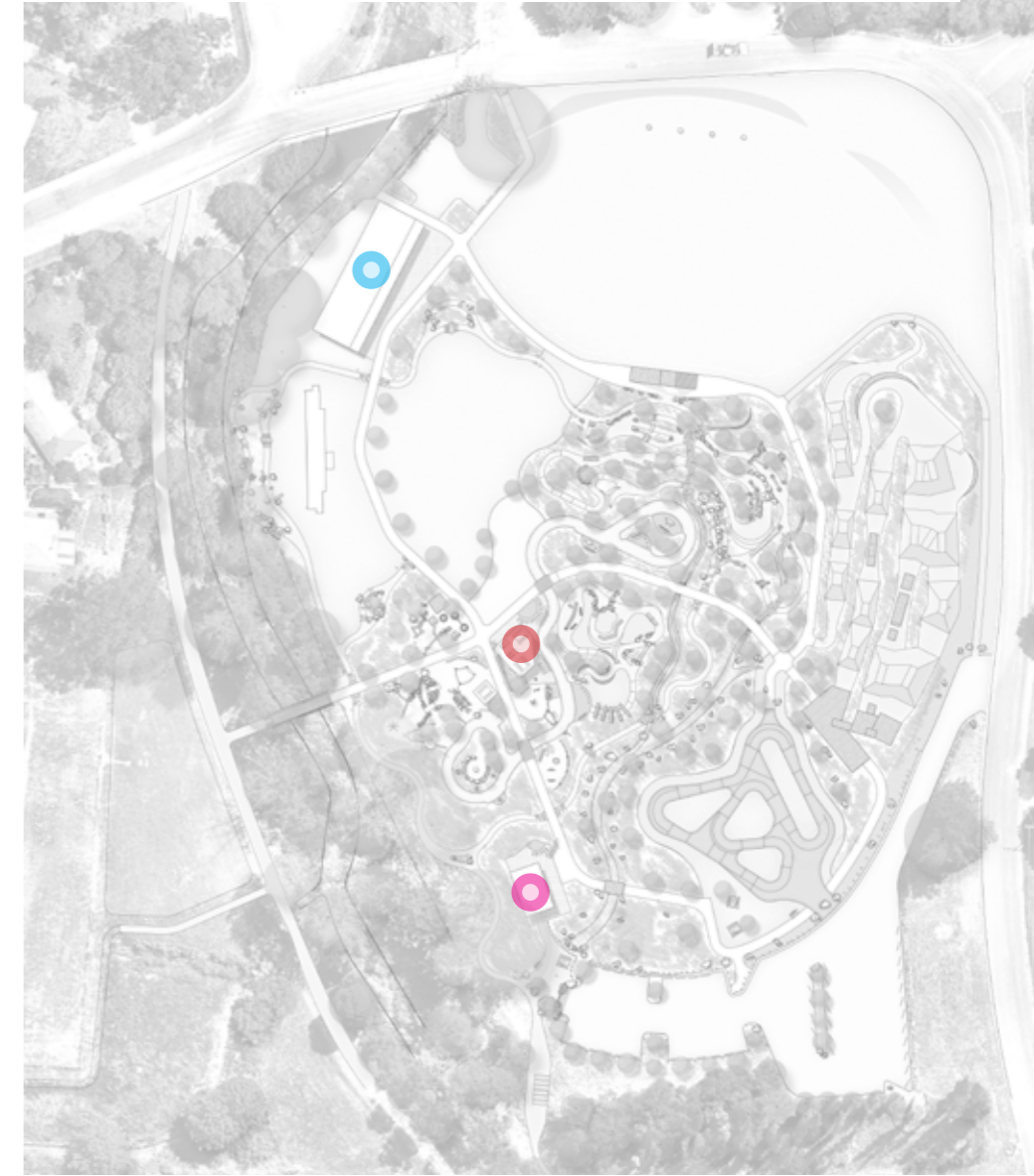
It is important that Hammon Park is an inclusive space for locals. A portion of the existing oval has been retained to ensure there is space for community use through events and gatherings that don't necessarily involve a bicycle.

There are many events or gatherings that could take place in such a space as the Hammon Park Trailhead Community and Youth Hub. The above diagram demonstrates how open space within the can accomodate common passive and active community activities.

These include:

- A typical farmers market layout. The visual demonstrates how large the space is and how may gazebos could be accomodated in a market event

- Using the goal posts for support, a temporary outdoor cinema could be installed, easily accommodating a large crowd
- The northern 50m of the existing oval is to be retained including goalposts for a variety of sports, activities and events
- The central portion of the oval is retained for passive and active recreation and events



SHARED USE FACILITIES

- Existing shared space community building to be investigated for improvements
- Toilets, showers, changing rooms, potable water supply and bike washing station including Changing Places standards facilities
- Large shelter with 2 picnic settings and BBQs to accomodate 2 small groups or one large group at the same time

There are three primary shared facilities included in the concept plan to accomodate all user groups. Access for all should be provided to all of these locations, with consideration given to fittings, fixtures and furniture to assist with making these as accessible as possible to everyone.

The shared, multi-use, facilities are designed to compliment cycling and play features. They are intended to appeal to and accomodate a range of community groups and individuals.

DIAGRAMS: DRAINAGE | VEGETATION | LIGHTING



DRAINAGE

- Creswick Creek
- Drainage swale
- Culvert
- Overland Flow

The concept plan relies on the current landform and extension of the swale drain to capture the stormwater and transferring it through to Creswick Creek. The overland flow typically heads to a swale or to Creswick Creek to move it away from the site.

There is an opportunity to capture nutrients utilising native vegetation, to prevent them being washed into the stormwater system. Retaining these nutrients onsite will assist in increasing the health of the Creswick Creek. Open swales with nutrient hungry vegetation and the use of stonework will assist with this and provide amenity. Refer to Water Sensitive Urban Design (WSUD) principles.



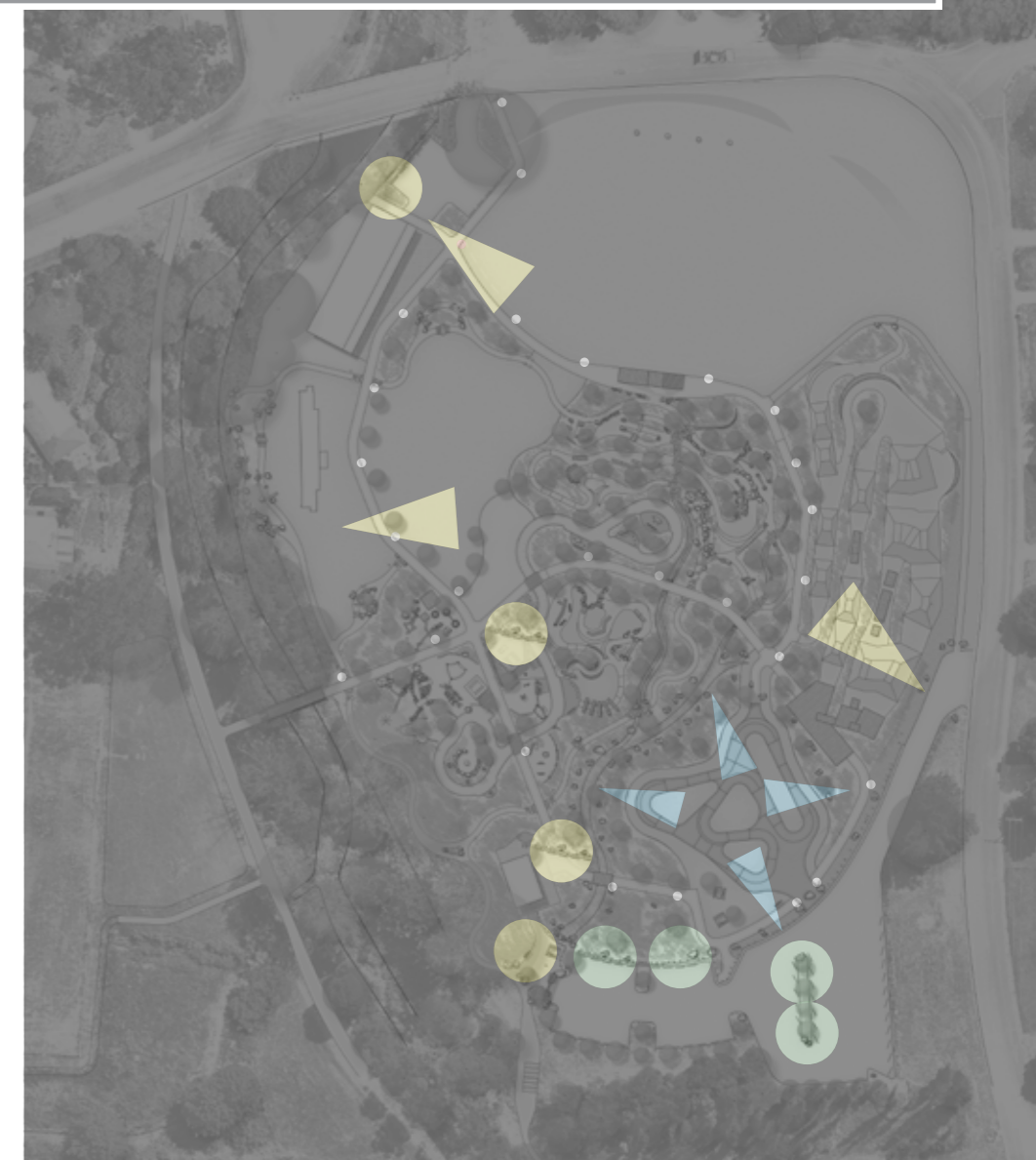
VEGETATION

- Where appropriate, weed species in the Creswick Creek corridor to be removed and revegetated with appropriate species to assist with creek regeneration
- Existing revegetation to be reviewed/enhanced and weeds removed
- Extension of revegetation to extend into the centre of the site in a central corridor for richer diversity of endemic flora and fauna
- Native species used to best perform WSUD principles and contribute to an environment of rich native flora and fauna

The site has a strong vegetation presence on the southern and western edges. The masterplan aims to enhance these existing areas and extend them into the center of the site, encouraging the establishment of a small nature corridor.

The selected species should be appropriate with the adjacent activities and require minimal maintenance. A native planting list, of local provenance, that can thrive in this location should be drawn upon when putting together planting lists in the detail design phase.

While the site may prove too busy for some fauna the corridor will provide protection and habitat to those that do find themselves within the site. Bird life will be rich within this corridor with the correct selection of species.



LIGHTING

- Retained existing sport field flood lighting
- Proposed timed flood lighting for pump track
- Proposed area lighting 24hrs/day to primary pedestrian locations
- Proposed timed area lighting to carpark
- Pedestrian level directional/location lighting

The proposed lighting principles are:

- Existing sports field lighting to be retained for controlled use and events
- Pump track to be lit until an agreed time, subject to community consultation and Council approval.
- Timed carpark lighting to coincide with the pump track lighting
- Area lighting to primary pedestrian points to provide user safety and passive surveillance
- Pedestrian level bollard lighting to provide guidance along the dual use primary access paths within the site

All lighting is required to be undertaken by a qualified lighting engineer and Australian Standards AS1158.3.1 for lighting of public space to be adhered to.



NATURE PLAY

- 1 Sand pit with informal log seating around the perimeter and sculptural play element in the centre. Water play on the eastern side of sandpit to contain access for all water and sand play table, manual bike pump station, log channels, rock pools/dishes, gold hunt sorting table and informal swale connecting to larger swale network
- 2 Music and noise play consisting of xylophone fence, whisper dishes and a series of differing drums
- 3 Shelter with custom picnic setting to reflect aesthetic of nature play
- 4 Large open play area including custom rope climbing structure, log hide-away and explore, elevated slide, rock and log path exploration, tunnel and informal perching

SAFETY TRACK

- 7 Asphalt safety track with line markings to replicate road environment. Differentiates from concrete dual use path with material differences
- 8 Parking area adjacent to the shelter and nature play primary area
- 9 Intersection with 'Stop' or 'Give Way' signage and markings. Speed bumps with 'SLOW DOWN' line marking are included before each intersection
- 10 Pull off areas with parking and roll playing items for play. These are to include items to replicate a petrol bowser, police station, fire station and ambulance drop off
- 11 Pedestrian crossing markings and signage

BIKE PLAYGROUND

- 17 Brightly painted large concrete culvert tunnels
- 18 Painted boards laid into a berm
- 19 Pump mounds
- 20 Green and blue balance features - balance rock ride and balance beam with bend
- 21 Steep challenge climb up to 1.5m high
- 22 Green and blue features - down ramp to ground level, a steep rock garden and a rock drop
- 23 Berm or balance beam with multiple bends
- 24 Berm or see-saw balance feature
- 25 Rock garden and bottom berm
- 26 Shortcut challenge log
- 27 Mound pumps
- 28 Transition berm for direction options
- 29 Start and finish area including sitting logs and signage

- opportunities around perimeter on appropriately sized boulders and logs
- 5 Tee-pee structure on hidden log and rock pathways for discovery and hangout
 - 6 'Campfire' story telling imagination circle surrounded with clumps of bamboo making it a partially enclosed outdoor room

ADJACENT AMENITIES

- 12 Primary custom shelter with two picnic settings and two BBQs beneath it. To provide outlook across the turf area, the safety track and the nature play area for community use
- 13 Multiple bike parking racks
- 14 Water fountain
- 15 Feature pole wall
- 16 Feature paving





SKILLS TRACK

- 1 Rock and log chicane for controlled speed entry
- 2 Green, blue and black log rollover features
- 3 Rideable rock pitched swale
- 4 Green rock and log rollovers
- 5 Blue log rides
- 6 Extra long log ride balance feature challenge
- 7 Green log ride balance feature
- 8 Green and blue rock garden agility features
- 9 Climb to 2m
- 10 Black rock drop and blue rock garden descending feature
- 11 Berm constructed against large log ride
- 12 Green and blue balance beam features
- 13 Rock balance shortcut feature

- 14 See-saw
- 15 Climb up to 2.0m
- 16 Green level table top jump
- 17 Transition berm

Notes

The skills track within Hammon Park provides beginner and intermediate features that would be expected to be encountered on the trail network. Features are to vary from the skills park which forms part of the Creswick Trails network, approximately 600m south of Hammon Park.

JUMP LINES

- Double black line
- Black line
- Blue line
- Green line

- 24 Curved timber wall ride 'Shark Fin' feature jump built into the existing batter
- 25 Curved timber wall ride return feature
- 26 Dirt berm built to match skill level of the line
- 27 Dirt table top jump sized and shaped to match the skill level of the associated jump line

- 18 Drop in start off elevated deck
- 19 Timber ramp start from elevated deck
- 20 Dirt ramp start
- 21 Hip jump with hanging ball wheel tap feature
- 22 'Whale Tail' timber ramp jump
- 23 Rollable sender timber table top jump



PUMP TRACK | PARKING | TRAIL HEAD | ADDITIONAL FACILITIES



PUMP TRACK

- 1 Existing pump track and landscape
- 2 Proposed connection to pump track existing asphalt platform
- 3 Existing primary platform and track entry
- 4 Existing pump track signage
- 5 Proposed picnic settings and adjacent shade trees

CARPARK

- 6 Existing compacted gravel 26 bay carpark (as altered for the carpark extension)
- 7 Proposed shade trees to existing carpark
- 8 Proposed extension of carpark to provide an additional 22 bays
- 9 Connection to Moore St
- 10 Shade trees to proposed carpark extension

ADDITIONAL FACILITIES

- 11 Structure designed to Changing Place standards, refer to <http://www.changingplaces.org.au>. Structure to include toilets, showers, changing facilities, general shelter and potable water supply
- 12 Bike washdown/hygiene station to prevent the spread of Root Rot/Dieback/Phytophthora cinnamomi with educational signage
- 13 Outdoor furniture including seating and bike racks.

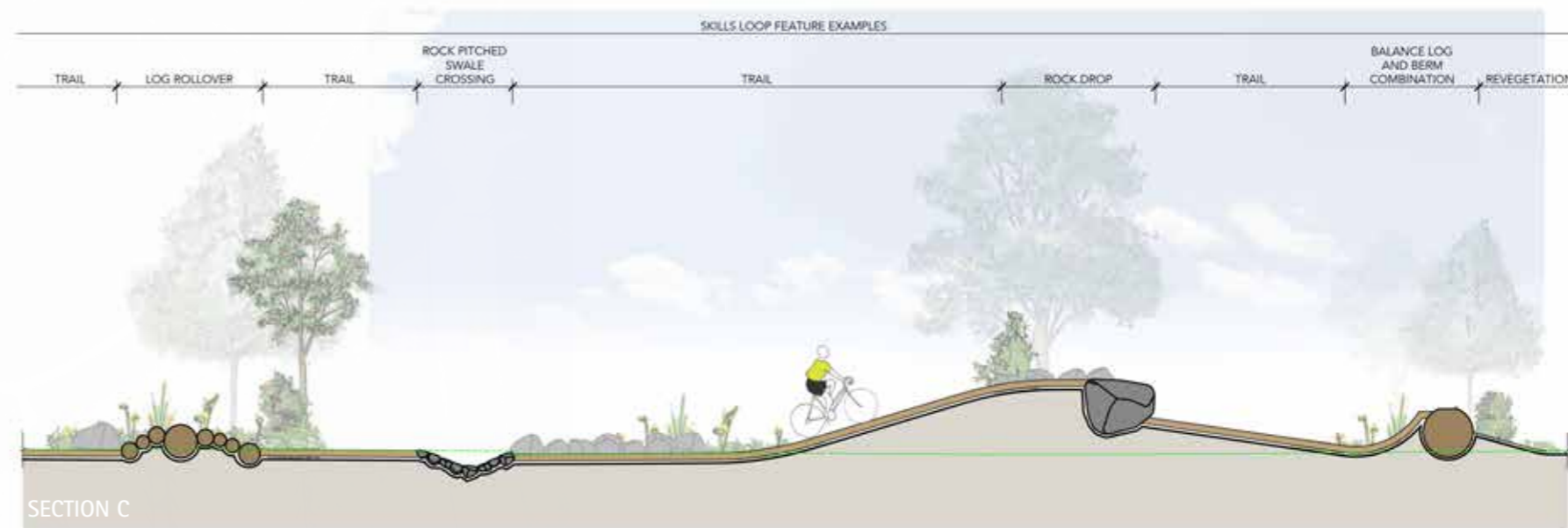
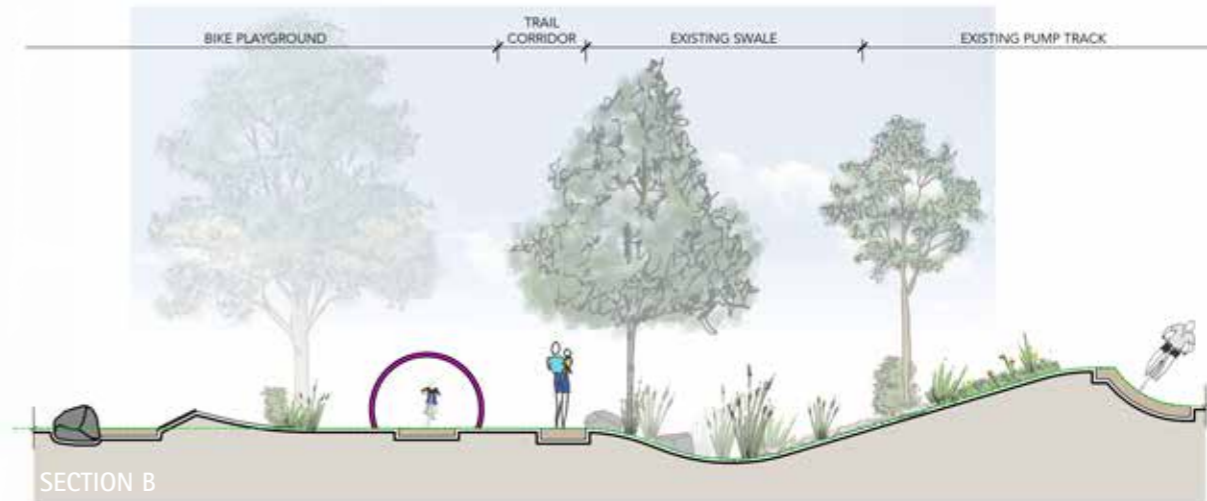
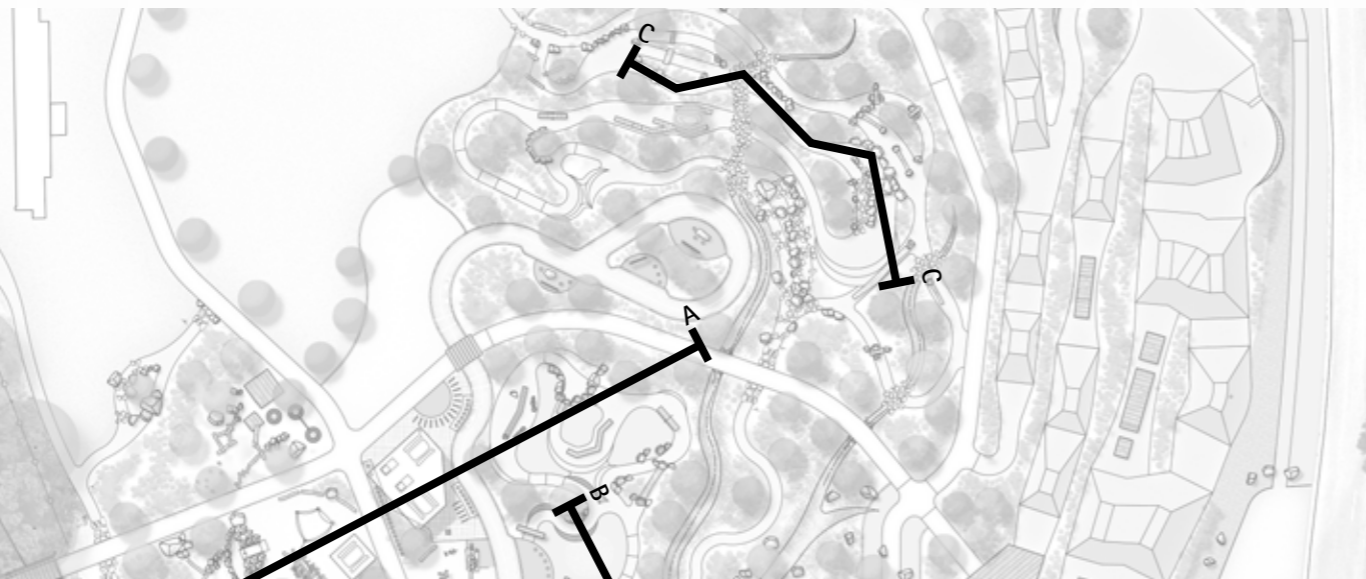
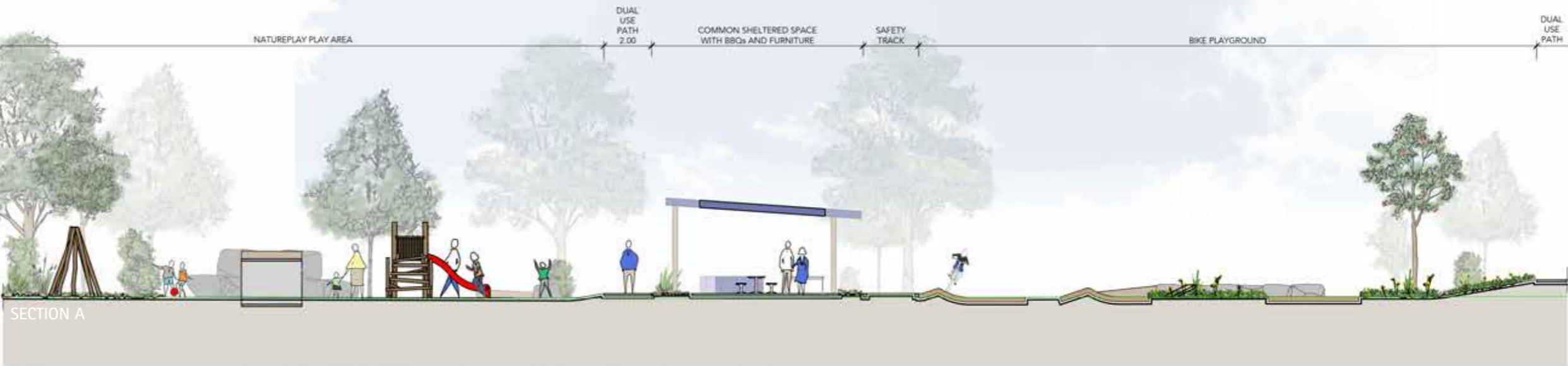
TRAILHEAD

- 14 Landmark signage/entry to the Creswick trail network
- 15 Picnic setting
- 16 Secure tool post and bench
- 17 Signage with detail of entire Creswick Trail Network and Hammon Park Trailhead Community and Youth Hub
- 18 Perching boulders and rocks

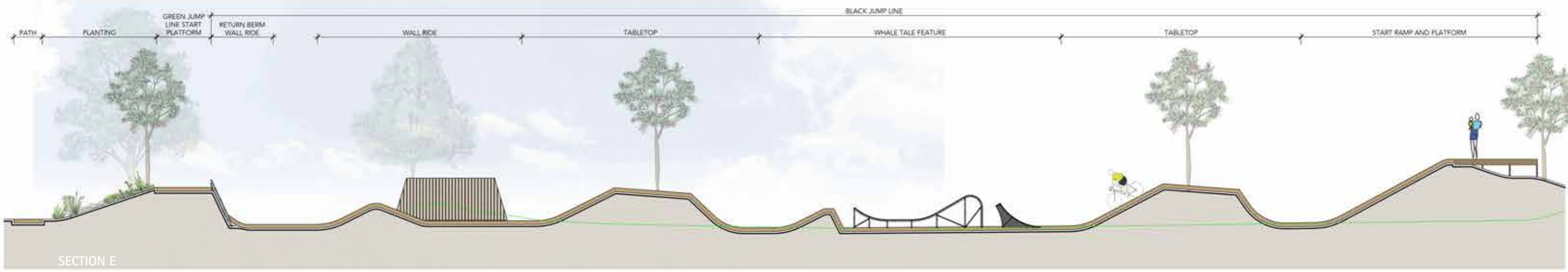
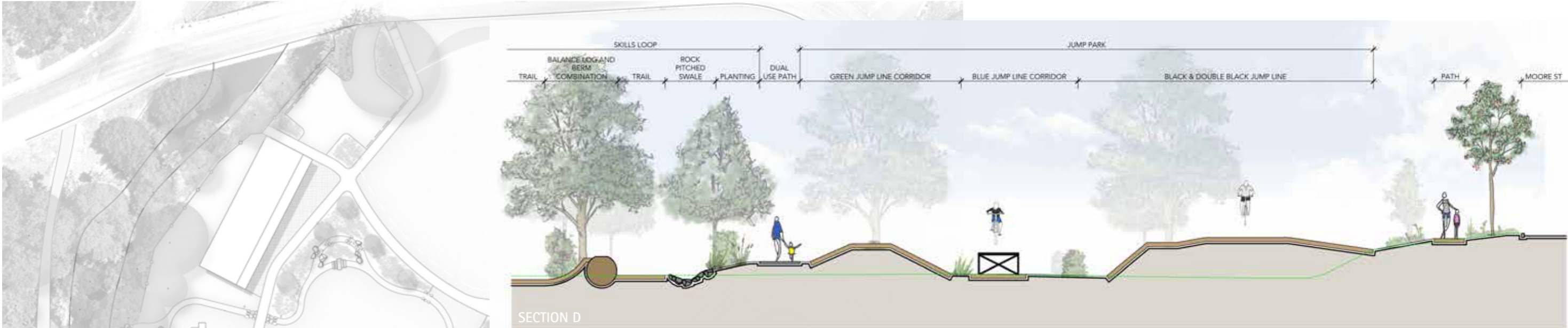
Note:
The trailhead serves the two separate projects of the Creswick Trails network and the Hammon Park Trailhead Community and Youth Hub. It is important that the trailhead addresses both of these projects with adequate signage installed to communicate both facilities. Although they are individual projects in scope and funding, they should appear as one on the ground.



SECTIONS



SECTIONS



PERSPECTIVE A



PERSPECTIVE B





PERSPECTIVE D



PERSPECTIVE E



PERSPECTIVE F



PERSPECTIVE G



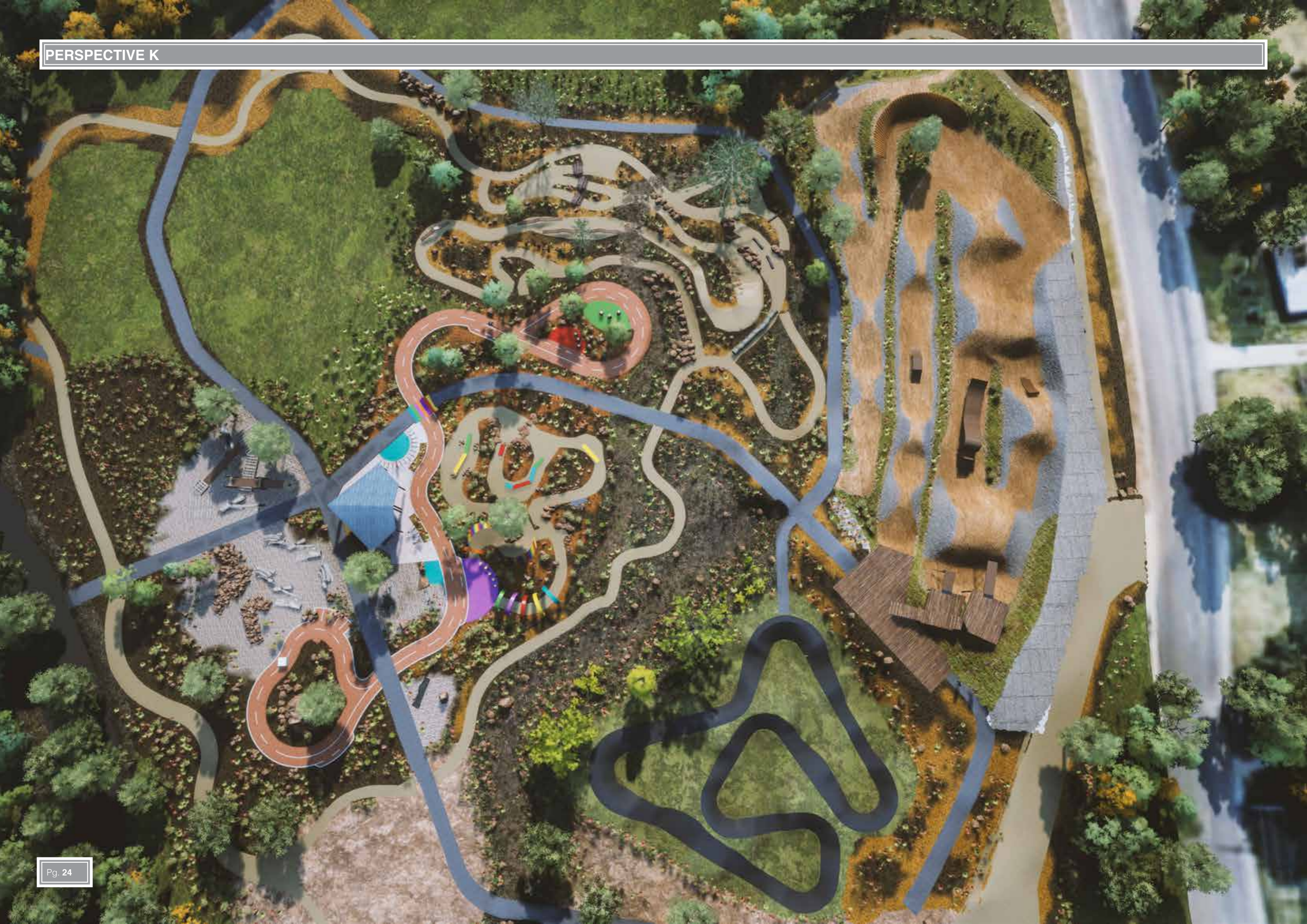


PERSPECTIVE I



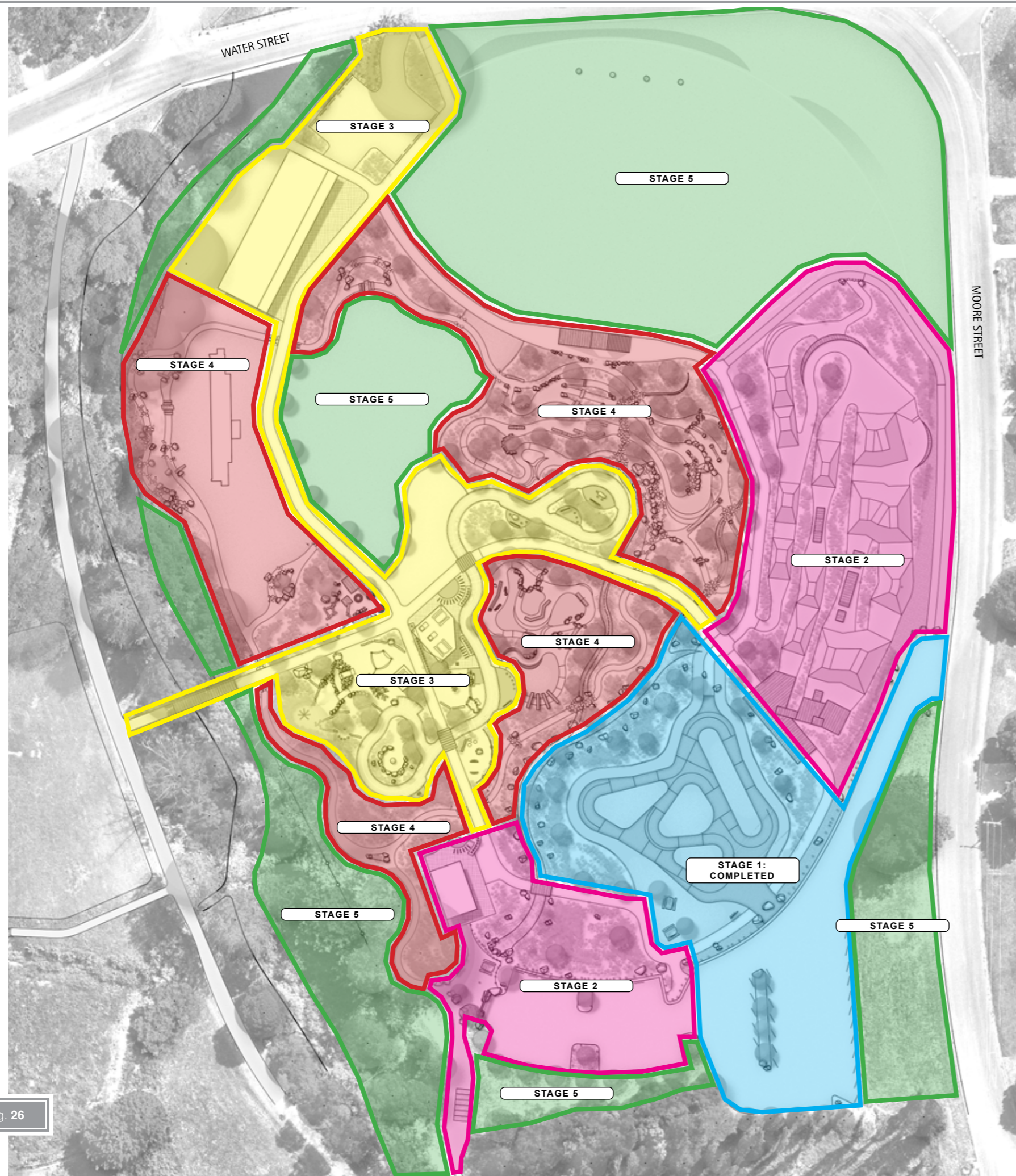
PERSPECTIVE J







STAGING PLAN



The Hammon Park Trailhead - Community and Youth Hub concept plan has been designed to create a facility where all aspects are arranged for the best outcome. It has also been designed to allow the staging of the project, in which

particular components can be built separately within the confinement outlined in this document to ensure the best final outcome is achieved. The suggested staging allows for best user growth and constructability.

STAGE 1: COMPLETED

In February 2019 Stage 1 works were completed and opened to the public. This included:

- Asphalt pump track
- Carpark
- Northern swale
- Associated landscaping

While this stage has been completed there are a couple of minor items to be completed to ensure cohesion with the Hammon Park Trailhead Community and Youth Hub

masterplan. This includes:

- Furniture in the turf area adjacent the primary entrance of the pump track
- Shade trees included into the existing carpark

STAGE 2

Stage two is the graduation of Hammon Park as a bike facility to generate more interest around the park and increase visitation. It will tie in with the completion of the Creswick Trails network in cementing the area as a prominent cycling destination.

To enhance the sites function as a cycling destination Stage 2 is to include:

- Jump Park
- Trail Head including signage of both Hammon Park Trailhead Community and Youth Hub and Creswick

Trails network, furniture, tool stand and landmark feature

- Connecting trail out of Hammon Park to the Creswick Trails network
- Changing Places facilities including toilets, showers, changing rooms, potable water supply, bike washdown station
- Looping path around jump park including a portion to be dual use concrete path and the other to be compacted gravel
- Associated landscaping

STAGE 3

Stage three introduces the pedestrian connection through Hammon Park - constructing and linking opportunities for: play, shelter and group gathering. With less focus on cycling, it is intended to encourage locals to embrace the location and it's new features as community space.

To achieve this stage 3 will include:

- Northern carpark upgrade
- Existing community building upgrade
- Connecting dual use concrete paths to the northern access point and western Wallaby Trail

- Creswick Creek bridge
- Central sheltered area with BBQ and furniture
- Large natureplay play space and sandpit (also for CX use)
- Safety track
- Associated landscape

STAGE 4

Stage 4 is the completion of all bike features associated with Hammon Park Trailhead - Community and Youth Hub. Remaining features have been grouped together in this stage due to their nature of construction being predominantly trail requiring similar sized equipment and trail features using natural materials. This will complete the facility and will open up opportunity to proficiently run events as intended as intended and outlined in this document.

The items include:

- Skills Loop

- Bike Playground (this could be pulled forward to Stage 3)
- Linking trails
- Mountain bike trials area
- Final section of dual use concrete pathconcrete path
- CX flyover feature

STAGE 5

Stage 5 addresses much of the soft landscape works that may otherwise be damaged and/or compromised during the construction of the earlier stages. This includes:

- Repair and/or improvement of turf area including irrigation
- Creswick Creek regeneration planting
- Addition and improvement to native planting along southern edge of Hammon Park
- Repair/Improvement to Moore St road reserve and adjacent area



COMMON GROUND

PO box 122 Margaret River WA 6285

www.commongroundtrails.com

info@commongroundtrails.com